



Warhawks Men's Basketball

University of Louisiana at Monroe



ULM (1-1, 0-0 SBC)

WARHAWKS

Vs.

Northwestern St.
DEMONS (2-1, 0-0 SLC)



Game 3

Thursday, Nov. 21, 2013 • 7:00 p.m.
Prather Coliseum (3,400) • Natchitoches, La.

Radio: - KLIP LA 105.3 FM, Nick White (PXP)
Twitter: @ULM_MBB

All-Time Series: ULM leads 70-48 (27-27 road)

ULM Quick Notes

- ULM has played Northwestern State more times than any other program in school history. The two schools were both members of the Gulf States Conference from 1954-1971, the Atlantic Sun Conference from 1978-1982 and the Warhawks were a member of the Southland Conference from 1982 until 2006.

- The Warhawks are coming off a 34 point win over Samford on Monday, 86-52. It was the largest margin of victory for ULM since a 97-43 win over Union College (Ky.) on Jan. 3, 2009. It was ULM's most lop-sided score over a Division I program since Feb. 3, 2000 when it defeated Lamar 95-58

- Four players scored in double-figures in the win over the Bulldogs. Olatayo led the way with 22 points while Jayon James and Tylor Ongwae each tallied 14. Daniel Grieves pitched in with 13 off the bench.

- 12 different ULM student-athletes saw action against Samford and everyone recorded at least one rebound or assist. Eight different players grabbed a steal and five different players recorded a block

- Senior Amos Olatayo has scored in double-figures in 10 consecutive games dating back to last season. It was his 10th career 20+ scoring game. He was ULM's leading scorer in 2012-13, averaging 17 points per game in league action

- The Warhawks are 352-233 all-time against teams currently in the Southland Conference

ULM MEN'S BASKETBALL SCHEDULE

Fri., Nov. 8	at No. 5/6 Kansas	L, 80-63
Mon., Nov. 18	Samford	W, 86-52
Thu., Nov. 21	at Northwestern St.	7:00 p.m.
Mon., Dec. 9	Thomas	7:00 p.m.
Sat., Dec. 14	at LSU	7:00 p.m.
Wed., Dec. 18	at Ole Miss	6:00 p.m.
Sun., Dec. 22	Louisiana Tech	7:00 p.m.
Fri., Dec. 27	at Ohio State	6:00 p.m.
Sat., Jan. 4	UL-Lafayette*	4:00 p.m.
Thurs., Jan. 9	at UT Arlington*	12:00 p.m.
Sat., Jan. 11	Texas State*	4:00 p.m.
Thu., Jan. 16	at Troy*	7:30 p.m.
Sat., Jan. 18	at South Alabama*	4:05 p.m.
Thu., Jan. 23	Western Kentucky*	7:00 p.m.
Sat., Jan. 25	Georgia State*	4:00 p.m.
Thu., Jan. 30	Arkansas State*	7:00 p.m.
Sat., Feb. 1	at UL-Lafayette*	7:15 p.m.
Thu., Feb. 6	at Texas State*	7:00 p.m.
Thu., Feb. 13	UT Arlington*	7:00 p.m.
Sat., Feb. 15	UALR*	4:00 p.m.
Thu., Feb. 20	at Georgia State*	6:00 p.m.
Sat., Feb. 22	at Western Kentucky*	7:00 p.m.
Thu., Feb. 27	South Alabama*	7:00 p.m.
Sat., Mar. 1	Troy*	4:00 p.m.
Thu., Mar. 6	at Arkansas State*	7:05 p.m.
Sat., Mar. 8	at UALR*	7:00 p.m.
Thurs., Mar. 13	Sun Belt Championships	TBA

All times Central and subject to change. Bold indicates home contests.; *-Sun Belt game

We are ULM. Please note that there are only two correct versions of our institution's name, the preferred acronym ULM and the full name, the University of Louisiana at Monroe. Any other reference, including Louisiana-Monroe, UL-Monroe, La.-Monroe, LAM, or simply Monroe, are incorrect.

Media Relations Contacts

Robbie Kleinmuntz (Primary)	Tom Ritter (Secondary)
Assistant Director	Graduate Assistant
kleinmuntz@ulm.edu	rittertf@warhawks.ulm.edu
O: 318-342-5462	O: 318-342-5451
C: 847-912-5380	C: 318-953-0734



Warhawks Men's Basketball

University of Louisiana at Monroe



Numerical Roster

No.	Player	Pos.	Ht.	Wt.	Cl.	Hometown (Previous School)
0	Marvin Williams	F/C	6-8	245	JR	Memphis, Tenn. (NW Florida State College)
1	Jayon James	F	6-6	225	SR	Patterson, N.J. (Lamar State-Port Arthur)
2	DeMondre Harvey	F	6-7	210	SO	Minden, La. (Pearl River CC)
3	Marcelis Hansberry	G	6-0	185	SR	Jackson, Miss. (Provine HS)
4	RJ McCray	G	6-2	190	SR	Arlington, Texas (Grace Prep Academy)
10	Amos Olatayo	G	6-4	200	SR	Houston, Texas (Navarro College)
11	Nick Coppola	G	5-11	195	FR	Richmond, Va. (Benedictine Prep)
12	Tylor Ongwae	F	6-7	205	JR	Eldoret, Kenya (Ranger College)
13	Chinedu Amajoyi	G	6-3	195	JR	Rancho Cucamonga, Calif. (Kilgore College)
15	Kyle Koszuta	G	6-2	190	SO	Niceville, Fla. (Niceville HS)
20	Evan Sims	F/C	6-8	235	JR	Houston, Texas (Lamar State-Port Arthur)
22	Lance Richard	G	5-10	170	FR	Monroe, La. (Sterlington HS)
23	Millaun Brown	F/C	6-7	230	SR	Gunnison, Miss. (East Mississippi CC)
33	Daniel Grieves	G/F	6-6	210	SO	Bay St. Louis, Miss. (Pearl River CC)
34	Leon Carswell II	F	6-3	210	JR	Bossier City, La. (Airline HS)
35	Colten Ponder	F	6-5	215	SO	Shreveport, La. (Calvary Baptist HS)

COACHING STAFF

Head Coach: Keith Richard (ULM '82)

Assistant Coach: Lonnie Cooper (Louisiana Tech '99)

Graduate Assistant Coach: Fabio Ribeiro (ULM '11)

Assistant Coach: Ryan Cross (Buffalo '95)

Assistant Coach J.A. Anglin (LSU Shreveport '10)

Coordinator of Basketball Operations: Wyatt Hodges

PRONUNCIATION

Keith/Lance RICHARD Ree-CHARD

MILLAUN Brown Mih-LAHN

JAYON James Jay-AHN

AMOS OLATAYO AIM-uhs Ole-ah-tay-O

CHINEDU AMAJOYI Chin-ay-due Om-uh-joy

TYLOR ONGWAE

Kyle KOSZUTA

Nick COPPOLA

Tie-ler Ong-why

Kus-zoo-tuh

Cup-oh-luh

BY CLASS

Seniors (5).....Millaun Brown
Marcelis Hansberry
Jayon James
R.J. McCray
Amos Olatayo
 Juniors (5).....Chinedu Amajoyi
Leon Carswell
Tylor Ongwae
Evan Sims
Marvin Williams
 Sophomores (4)Daniel Grieves
DeMondre Harvey
Kyle Koszuta
Colten Ponder
 Freshmen (2).....Nick Coppola
Lance Richard

BY POSITION

Guards.....Chinedu Amajoyi
Nick Coppola
Marcelis Hansberry
Kyle Koszuta
RJ McCray
Amos Olatayo
Lance Richard
 Guard/FowardDaniel Grieves
 ForwardsLeon Carswell
DeMondre Harvey
Jayon James
Tylor Ongwae
Colten Ponder
 Forward/CenterMillaun Brown
Evan Sims
Marvin Williams

BY STATE/COUNTRY

California.....Chinedu Amajoyi
 Florida.....Kyle Koszuta
 KenyaTylor Ongwae
 Louisiana.....Leon Carswell
DeMondre Harvey
Colten Ponder
Lance Richard
 Mississippi.....Millaun Brown
Daniel Grieves
Marcelis Hansberry
 New JerseyJayon James
 TennesseeMarvin Williams
 TexasR.J. McCray
Amos Olatayo
Evan Sims
 VirginiaNick Coppola

WE ARE ULM

12 REGULAR SEASON CHAMPIONSHIPS

1961-62 - Gulf States Conference
 1964-65 - Gulf States Conference
 1978-79 - Atlantic Sun Conference
 1979-80 - Atlantic Sun Conference
 1985-86 - Southland Conference
 1989-90 - Southland Conference
 1990-91 - Southland Conference
 1992-93 - Southland Conference
 1993-94 - Southland Conference
 1995-96 - Southland Conference
 1996-97 - Southland Conference
 2006-07 - Sun Belt Conference West Division

NINE POST-SEASON APPEARANCES

1978-79 - NIT
 1981-82 - NCAA Tournament
 1985-86 - NCAA Tournament
 1987-88 - NIT
 1989-90 - NCAA Tournament
 1990-91 - NCAA Tournament
 1991-92 - NCAA Tournament
 1992-93 - NCAA Tournament
 1995-96 - NCAA Tournament

EIGHT TOURNAMENT CHAMPIONSHIPS

1978-79 - Atlantic Sun Conference
 1981-82 - Atlantic Sun Conference
 1985-86 - Southland Conference
 1989-90 - Southland Conference
 1990-91 - Southland Conference
 1991-92 - Southland Conference
 1992-93 - Southland Conference
 1995-96 - Southland Conference



Warhawks Men's Basketball

University of Louisiana at Monroe



Keith Richard

Head Coach

Fourth Year at ULM
13th Season Overall

Alma Mater: ULM (1982)

THE RICHARD FILE

COACHING HONORS

- 1999 Sun Belt Coach of the Year
- Has been part of the coaching staff for seven NCAA Tournament and three NIT teams

COACHING CAREER

Season	School	Position	Record
1984-85	ULM	Graduate Assistant	17-12
1985-86	ULM	Graduate Assistant	20-10/NCAA
1986-87	Marshall	Assistant Coach	25-6/NCAA
1987-88	Marshall	Assistant Coach	24-8/NIT
1988-89	Marshall	Assistant Coach	15-15
1989-90	ULM	Assistant Coach	22-8/NCAA
1990-91	ULM	Assistant Coach	25-8/NCAA
1991-92	ULM	Assistant Coach	19-10/NCAA
1992-93	ULM	Assistant Coach	26-5/NCAA
1993-94	ULM	Assistant Coach	19-9
1994-95	La. Tech	Assistant Coach	14-13
1995-96	La. Tech	Associate Head Coach	11-17
1996-97	La. Tech	Associate Head Coach	15-14
1997-98	La. Tech	Associate Head Coach	12-15
1998-99	La. Tech	Head Coach	19-9
1999-00	La. Tech	Head Coach	21-8
2000-01	La. Tech	Head Coach	17-12
2001-02	La. Tech	Head Coach	22-10/NIT
2002-03	La. Tech	Head Coach	12-15
2003-04	La. Tech	Head Coach	15-15
2004-05	La. Tech	Head Coach	14-15
2005-06	La. Tech	Head Coach	20-13/NIT
2006-07	La. Tech	Head Coach	10-20
2008-09	LSU	Assistant Coach	27-8/NCAA
2009-10	LSU	Assistant Coach	11-20
2010-11	ULM	Head Coach	7-24
2011-12	ULM	Head Coach	3-26
2012-13	ULM	Head Coach	4-23
2013-14	ULM	Head Coach	1-1

PLAYING CAREER

- Played for ULM from 1978-82; Coached by Lenny Fant, Benny Hollis & Mike Vining
- 1979 Atlantic Sun Tournament Champions, NIT
- 1980 Atlantic Sun Regular Season Champions
- 1982 Atlantic Sun Tournament Champions, NCAA
- Two-time team captain ('81 & '82)
- Led team in assists twice

EDUCATION

- Bachelor's degree in general business, ULM (1982)
- Master's degree in guidance counseling, ULM (1986)

ULM Quick Notes Continued...

- Sophomore Daniel Grieves has hit five of his first seven three-pointers on the season and is shooting a league-leading .714 from beyond-the-arc. He went two-for-two from long-range in the season opener against No. 5/6 Kansas
- Olatayo is the reigning Warhawk Male of the Week winner, released Tuesday
- ULM is 385-163 all-time in Fant-Ewing Coliseum (43 seasons)
- ULM won its non-conference home opener for the second consecutive season after posting a 68-61 win over Southeastern Louisiana in overtime last year
- Junior Marvin Williams posted a game-high 19 points against No. 5/6 Kansas in the season opener, outscoring Andrew Wiggins who was named Preseason National Player of the Year by cbssports.com. Williams went 8-for-13 from the field and grabbed a team-high six rebounds in 24 minutes
- Senior Jayon James was named to the SBC Preseason All-Conference Third-Team after leading the squad in minutes, rebounds, assists, blocks and steals last season. James and Olatayo were both named to the College Sports Madness SBC Preseason All-Conference Third-Team
- ULM earned the 2012-13 SBC team academic award and was one of 21 NCAA Division I men's basketball programs to earn Team Academic Excellence Awards from the National Association of Basketball Coaches
- The Warhawks carry a full scholarship roster for the first time under head coach Keith Richard after inheriting APR penalties. Richard is in his fourth season with the program

RICHARD VS. 2013-14 OPPONENTS

Arkansas State	5-8
Georgia State	0-0
Kansas.....	0-1
Louisiana Tech.....	0-2
UL-Lafayette.....	6-11
LSU.....	0-1
Northwestern State	1-1
Ohio State	0-0
Ole Miss.....	0-1
Samford	1-0
South Alabama	4-5
Texas-Arlington.....	0-0
Texas State	0-0
Thomas	0-0
Troy	0-4
UALR	7-6
Western Kentucky	5-7

ULM ALL-TIME RECORD VS. TEAMS CURRENTLY IN THE SOUTHLAND CONFERENCE: **352-233**

Abilene Christian	1-0
Central Arkansas	3-1
Houston Baptist	18-8
Lamar	24-26
McNeese State	61-56
New Orleans	9-4
Nicholls State	54-17
Northwestern State	70-48
Oral Roberts	0-2
Sam Houston State	19-19
Southeastern Louisiana	61-32
Stephen F. Austin	30-20
Texas A&M-Corpus Christi	2-0



Warhawks Men's Basketball

University of Louisiana at Monroe



ULM Quick Facts

Location _____ Monroe, La.
Enrollment _____ 8,858
Founded _____ 1931
Nickname/Mascot _____ Warhawks/Ace
Colors _____ Maroon & Gold
President _____ Dr. Nick Bruno
Director of Athletics _____ Brian Wickstrom
Conference _____ Sun Belt
Affiliation _____ NCAA Division I
All-Time Record _____ 901-797 (62nd season)
Winning Seasons _____ 38 (20+ wins 10 times)
Home Venue _____ Fant-Ewing Coliseum (7000)
Opened _____ 1971
Press Row Phone _____ 318-342-6920

Head Coach _____ Keith Richard
Record at ULM _____ 15-74 (fourth year)
Career Record _____ 165-191 (13th year)
Assistant Coach _____ Ryan Cross
Assistant Coach _____ Lonnie Cooper
Assistant Coach _____ J.A. Anglin
Graduate Assistant _____ Fabio Ribeiro
Coordinator of MBB Ops. _____ Wyatt Hodges
Athletic Trainer _____ Jeremy Teblum
Strength Coach _____ Brian Seitz

Website _____ www.ulmwarhawks.com
Facebook _____ www.facebook.com/warhawks
Twitter _____ @ULM_MBB

Scouting Northwestern State

Northwestern State, which was picked to win the Southland Conference in both the Preseason Coaches and SID Polls, registered a 111-92 victory over Auburn before falling 88-74 at LSU last weekend. The Demons opened the season with a 92-76 win over LeTourneau after winning the Southland Conference last season. They finished with a 23-9 (15-3 SLC) mark in 2012-13.

NSU is coached by Mike McConathy who enters his 15th season at the helm. McConathy has led the Demons to seven SLC Championship games and three NCAA Tournament appearances. McConathy coached NSU to a 64-63 win as a No. 14 seed in the NCAA Tournament over No. 3 Iowa in 2006. The Demons made it back to the NCAA Tournament last season before falling to Florida, 79-47, in another #14 vs. #3 match-up. McConathy is 225-214 at NSU and 577-373 in his 31 years of coaching.

The Demons returned three starters and 12 letter-winners from last year's squad. Preseason All-Southland First-Team selections Jalan West and DeQuan Hicks highlight the lineup. West, a redshirt-sophomore, is averaging 18.5 points, 5.3 assists and 4.7 rebounds after three games. He poured in 23.5 points against Auburn and posted 18 and 17 vs. LSU and LeTourneau, respectively. West is the reigning Southland Conference Player of the Week, which was awarded on Monday, and earned SLC Freshman of the Year honors last season.

Hicks, a senior in his second season at NSU, is averaging 16.1 points per game and has recorded two double-doubles in three games. He was named Southland Conference Newcomer of the Year last season after ranking 10th in the nation with a 58.6 field goal percentage.

NSU'S 2013-14 RESULTS

Nov. 8 NSU 92, LeTourneau 76
Nov. 15 NSU 111, Auburn 92
Nov. 16 LSU 88, NSU 74

ALL-TIME SERIES: ULM 70, NSU 48

1951-52	A	L	58-82	1964-65	A	W	76-72	1978-79	A	W	72-65	1991-92	H	W	109-88
1951-52	H	L	49-71	1965-66	A	L	78-90	1978-79	H	W	73-59	1991-92	A	L	85-93
1952-53	A	L	51-91	1965-66	H	W	88-77	1979-80	H	L	63-69	1992-93	A	W	89-79
1952-53	N	L	51-53	1966-67	A	W	79-71	1979-80	A	W	80-73	1992-93	H	W	94-73
1952-53	H	L	60-78	1966-67	N	W	90-78	1980-81	A	W	66-65	1993-94	A	W	95-87
1953-54	H	L	65-82	1966-67	H	W	75-58	1980-81	H	W	79-67	1993-94	H	W	88-80
1953-54	A	L	62-80	1967-68	A	L	99-104	1980-81	N	W	79-73	1994-95	A	L	66-69
1954-55	A	L	94-101	1967-68	H	L (ot)	111-114	1981-82	H	W	85-76	1994-95	H	W	75-72
1954-55	H	L	69-92	1968-69	A	L	69-88	1981-82	A	L (2ot)	80-84	1995-96	H	W	94-74
1955-56	H	L	69-74	1968-69	H	W	107-80	1981-82	H	W	81-64	1995-96	A	W	80-70
1955-56	A	L	63-84	1969-70	A	L	94-95	1982-83	H	W	55-44	1996-97	A	W	70-65
1956-57	H	W	86-83	1969-70	H	W	86-81	1982-83	A	W	56-53	1996-97	H	W	87-75
1956-57	A	L	56-70	1969-70	A	W	92-89	1983-84	A	W	96-66	1996-97	N	W	72-54
1957-58	A	L	54-69	1970-71	A	L	88-100	1983-84	H	W	80-53	1997-98	A	L	75-85
1957-58	H	L	80-85	1970-71	H	W	97-69	1984-85	H	W	85-66	1997-98	H	W	89-83
1958-59	H	L	60-78	1971-72	H	W	79-60	1984-85	A	W	88-71	1998-99	A	L	62-63
1958-59	A	L	83-96	1971-72	A	W	76-70	1984-85	H	W	72-65	1998-99	H	W	78-58
1959-60	A	L	67-78	1972-73	H	W	73-65	1985-86	H	W	69-60	1999-00	H	L	61-63
1959-60	H	L	61-73	1972-73	A	W (ot)	76-70	1985-86	A	L	60-64	1999-00	A	L	76-81
1960-61	H	W	69-61	1973-74	H	W (2ot)	103-101	1985-86	H	W	82-64	2000-01	H	L	61-63
1960-61	A	L	63-83	1973-74	A	W	86-75	1986-87	H	L (ot)	72-78	2000-01	A	L	65-92
1961-62	A	W	64-60	1974-75	A	W	74-70	1986-87	A	W	60-57	2001-02	N	W	72-64
1961-62	H	W	88-81	1974-75	H	W	100-77	1987-88	H	L	58-60	2001-02	H	W	96-83
1962-63	A	W	71-67	1975-76	A	W	80-69	1987-88	A	W	66-64	2002-03	A	W	75-63
1962-63	H	W	79-68	1975-76	H	L	71-75	1988-89	A	W, (2ot)	108-102	2002-03	H	L	78-83
1963-64	A	L (ot)	75-79	1976-77	A	L	67-81	1988-89	H	W	93-88	2003-04	H	L	59-67
1963-64	H	W	98-89	1976-77	H	L	72-74	1989-90	A	W	85-75	2004-05	A	L	71-88
1964-65	H	W	104-81	1977-78	H	W	112-77	1989-90	H	W	82-67	2005-06	H	L	68-81
				1977-78	H	W (ot)	57-56	1990-91	A	W	66-65	2005-06	A	L	65-81
				1977-78	A	W	75-56	1990-91	H	W	95-79	2011-12	H	L	63-76



Warhawks Men's Basketball

University of Louisiana at Monroe



In ULM's Last Outing...

Warhawks Fly Past Bulldogs 86-52 in Home Opener

MONROE, La. — Four ULM men's basketball student-athletes reached double-figure points as the Warhawks cruised to an 86-52 victory over Samford in the 2013-14 home opener at Fant-Ewing Coliseum on Monday.

Senior Amos Olatayo led the charge for ULM (1-1) with a game-high 22 points. He shot 10-for-13 from the field and hit a pair of three-pointers. Senior Jayon James and junior Tylor Ongwae followed with 14 points apiece, while sophomore Daniel Grieves pitched in with 13 points off the bench.

James was one rebound away from a double-double as he brought down nine. Freshman Nick Coppola distributed the wealth with a game-high six assists.

The Warhawks held Samford (1-3) to 38.6 percent shooting from the field including a 1-for-15 mark (6.7 percent) from beyond-the-arc. The Bulldogs had hit at least seven threes in all of its first three contests this season. Tim Williams led the team with 14 points while Tyler Hood tallied 12.

ULM held a 14-0 edge in fast-break points and a 23-7 clip in points off turnovers. 12 different Warhawks played in the game and 11 grabbed at least one rebound. ULM out-rebounded Samford 42-32.

The Warhawks held a slight 11-10 advantage early when they went on an 8-0 run to jump ahead 19-10 after a fast-break lay-up by Ongwae with 8:55 remaining in the first half. Still leading 34-24 with 2:08 left, ULM closed out the half on a 6-0 run to create distance at 44-27. James ended the half on a high-note after grabbing a steal and throwing down a big dunk with two seconds remaining.

ULM picked up where it left off to begin the second half, increasing its lead to 58-31 with 15:12 left in the game. Grieves hit two of his three long-range shots to spark the 14-4 run. He finished the game 5-for-7 shooting.

The Warhawks kept pouring it on and boosted their lead to 84-43 with 2:48 remaining after junior Chinedu Amajoyi hit his second field goal of the game. Amajoyi registered six points in the contest.

Five different ULM student-athletes recorded a block in the game, including a big swat by sophomore DeMondre Harvey in the second half. Harvey grabbed five rebounds in the game.

Samford 52 • 1-3

#	Player	Total		3-Ptr	Rebounds			PF	TP	A	TO	Blk	Stl	Min
		FG	FGA		Off	Def	Tot							
05	Wilson, Russell	* 1-2	0-1	2-4	0	1	1	4	4	3	2	0	2	24
10	Miller, Connor	* 1-5	0-2	0-0	0	3	3	1	2	2	1	0	0	29
11	Kelly, Raijon	* 3-10	0-5	0-0	0	2	2	3	6	0	1	0	0	21
32	Williams, Tim	* 7-13	0-0	0-0	2	3	5	0	14	0	4	1	1	23
35	Hood, Tyler	* 4-11	1-5	3-4	3	3	6	1	12	0	1	1	0	32
00	Enechionya, Nnamdi	0-0	0-0	0-0	0	0	0	0	0	0	0	0	0	3
01	Roberts, Brandon	2-5	0-1	0-0	0	2	2	0	4	0	1	0	0	10
04	Williams, Isaiah	2-5	0-1	1-2	0	2	2	3	5	4	2	0	3	31
23	Capps, Jordan	1-3	0-0	0-0	0	2	2	1	2	0	1	0	0	12
25	Bradley, Michael	1-2	0-0	1-1	2	2	4	2	3	0	1	0	0	7
33	Ikezu, Emeka	0-1	0-0	0-1	0	2	2	3	0	0	1	0	0	8
Team					1	2	3							
Totals		22-57	1-15	7-12	8	24	32	18	52	9	15	2	6	200

FG % 1st Half: 13-25 52.0% 2nd half: 9-32 28.1% Game: 22-57 38.6%
 3FG % 1st Half: 0-4 0.0% 2nd half: 1-11 9.1% Game: 1-15 6.7%
 FT % 1st Half: 1-1 100.0 2nd half: 6-11 54.5% Game: 7-12 58.3%

Deadball
Rebound:
2,1

ULM 86 • 1-1

#	Player	Total		3-Ptr	Rebounds			PF	TP	A	TO	Blk	Stl	Min
		FG	FGA		Off	Def	Tot							
00	Williams, Marvin	* 2-6	1-1	0-0	0	3	3	3	5	1	1	1	0	21
01	James, Jayon	* 6-8	0-1	2-2	1	8	9	2	14	4	2	1	2	26
10	Olatayo, Amos	* 10-13	2-4	0-0	2	2	4	1	22	0	2	1	1	25
11	Coppola, Nick	* 2-5	0-1	1-3	0	3	3	2	5	6	0	0	1	26
12	Ongwae, Tylor	* 5-11	0-1	4-5	3	2	5	0	14	3	1	1	2	21
02	Harvey, DeMondre	1-2	0-0	0-0	0	5	5	2	2	1	0	1	1	13
04	McCray, RJ	1-4	0-2	3-3	0	1	1	0	5	2	0	0	2	14
13	Amajoyi, Chinedu	2-3	0-1	2-4	2	0	2	0	6	0	0	0	0	6
15	Koszuta, Kyle	0-4	0-3	0-0	0	0	0	1	0	1	1	0	1	13
20	Sims, Evan	0-1	0-0	0-0	0	1	1	1	0	0	1	0	0	7
23	Brown, Milaun	0-3	0-0	0-0	3	1	4	3	0	0	1	0	0	12
33	Grieves, Daniel	5-7	3-5	0-1	1	2	3	1	13	1	1	0	1	16
Team					0	2	2							
Totals		34-67	6-19	12-18	12	30	42	16	86	19	10	5	11	200

FG % 1st Half: 18-36 50.0% 2nd half: 16-31 51.6% Game: 34-67 50.7%
 3FG % 1st Half: 3-10 30.0% 2nd half: 3-9 33.3% Game: 6-19 31.6%
 FT % 1st Half: 5-8 62.5% 2nd half: 7-10 70.0% Game: 12-18 66.7%

Deadball
Rebound:
2

Officials: R-Ray Natili, U1-Karl Hess, U2-Joej Richardson
 Technical fouls: Samford-None. ULM-None.
 Attendance: 1503

Score by periods	1st	2nd	Total
Samford	27	25	52
ULM	44	42	86

HOME COURT ADVANTAGE

385-163 All-Time in Fant-Ewing Coliseum

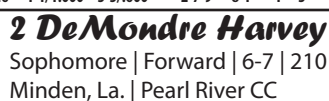
ULM RECORDS IN FANT-EWING

Year	Games	Record	Pct.	Avg. Attend.
1971-72	10	6-4	.600	4,190
1972-73	11	8-3	.727	3,232
1973-74	11	8-3	.727	3,250
1974-75	12	11-1	.917	3,454
1975-76	13	10-3	.769	5,451
1976-77	13	9-4	.692	5,073
1977-78	13	10-3	.769	4,459
1978-79	16	15-1	.937	5,215
1979-80	14	10-4	.714	3,678
1980-81	16	8-8	.500	3,067
1981-82	16	13-3	.812	3,808
1982-83	14	12-2	.857	2,946
1983-84	16	11-5	.688	2,098
1984-85	13	9-4	.692	2,380
1985-86	15	14-1	.933	2,114
1986-87	13	8-5	.615	2,582
1987-88	12	10-2	.833	2,582
1988-89	12	8-4	.667	2,861
1989-90	14	13-1	.928	2,949
1990-91	14	14-0	1.000	3,327
1991-92	12	9-3	.750	2,710
1992-93	14	14-0	1.000	3,892
1993-94	14	10-4	.714	3,351
1994-95	12	9-3	.750	3,619
1995-96	11	8-3	.727	2,182
1996-97	12	9-3	.750	1,822
1997-98	11	7-4	.636	1,301
1998-99	11	7-4	.636	1,913
1999-00	14	11-3	.786	2,003
2000-01	13	9-4	.692	935
2001-02	12	12-0	1.000	3,437
2002-03	12	7-5	.583	1,412
2003-04	13	9-4	.692	1,624
2004-05	13	6-7	.462	1,296
2005-06	13	8-5	.615	793
2006-07	14	14-0	1.000	1,952
2007-08	12	5-7	.417	1,338
2008-09	14	8-6	.571	907
2009-10	14	8-6	.571	1,398
2010-11	13	4-9	.308	1,400
2011-12	13	0-13	.000	1,438
2012-13	12	3-9	.250	1,255
2013-14	1	1-0	1.000	1,503
TOTALS	523	385-163	.703	



	Season-High	Career-High
Pts	19, vs. KU (11/8/13)	19, vs. KU (11/8/13)
FG	8, vs. KU (11/8/13)	8, vs. KU (11/8/13)
3FG	1, vs. SAM (11/18/13)	1, vs. SAM (11/18/13)
FT	3, vs. KU (11/8/13)	3, vs. KU (11/8/13)
Ast	1, vs. SAM (11/18/13)	1, vs. SAM (11/18/13)
Reb	6, vs. KU (11/8/13)	6, vs. KU (11/8/13)
Blocks	1, vs. SAM (11/18/13)	1, vs. SAM (11/18/13)
Steals	N/A	N/A
Min	24, vs. KU (11/8/13)	24, vs. KU (11/8/13)

Opponent	Date	GS	Min	FG-FGA/Pct.	3FG-FGA	FT-FTA/PCT	O-D-T	PF-FO	A	TO	Blk	Stl	Pts/Avg
Kansas	11/8/13	*	24	8-13/.615	0-0	3-5/.600	2-4-6	5-1	0	2	0	0	19/19.0
Samford	11/18/13	*	21	2-6/.333	1-1	0-0/.000	0-3-3	3-0	1	1	1	0	5/12.0
NSU													
Thomas													
LSU													
Ole Miss													
La. Tech													
OSU													
ULL													
UTA													
TX ST													
Troy													
USA													
WKU													
GSU													
ASU													
ULL													
TX ST													
UTA													
UALR													
GSU													
WKU													
USA													
Troy													
ASU													
UALR													
Totals		2	45	10-19/.526	1-1/1.000	3-5/.600	2-7-9	8-1	1	3	1	0	24/12.0



	Season-High	Career-High
Pts	2, vs. SAM (11/18/13)	2, vs. SAM (11/18/13)
FG	1, vs. SAM (11/18/13)	1, vs. SAM (11/18/13)
3FG	N/A	N/A
FT	N/A	N/A
Ast	1, vs. SAM (11/18/13)	1, vs. SAM (11/18/13)
Reb	5, vs. SAM (11/18/13)	5, vs. SAM (11/18/13)
Blocks	1, vs. SAM (11/18/13)	1, vs. SAM (11/18/13)
Steals	1, two times	1, two times
Min	13, vs. SAM (11/18/13)	13, vs. SAM (11/18/13)

Opponent	Date	GS	Min	FG-FGA/Pct.	3FG-FGA	FT-FTA/PCT	O-D-T	PF-FO	A	T	Blk	Stl	Pts/Avg
Kansas	11/8/13	9	0-0/.000	0-0	0-0/.000	0-2-2	2-0	0	1	0	1	0/0.0	
Samford	11/18/13	13	1-2/.500	0-0	0-0/.000	0-5-5	2-0	1	0	1	1	2/1.0	
NSU													
Thomas													
LSU													
Ole Miss													
La. Tech													
OSU													
ULL													
UTA													
TX ST													
Troy													
USA													
WKU													
GSU													
ASU													
ULL													
TX ST													
UTA													
UALR													
GSU													
WKU													
USA													
Troy													
ASU													
UALR													
Totals		0	22	1-2/.500	0-0	0-0/.000	0-7-7	4-0	1	1	1	2	2/1.0



	Season-High	Career-High
Pts	14, vs. SAM (11/18/13)	26, vs. FAU (12/29/13)
FG	6, vs. SAM (11/18/13)	12, vs. FAU (12/29/13)
3FG	N/A	3, at UALR (12/1/12)
FT	2, vs. SAM (11/18/13)	7, at NT (1/5/13)
Ast	4, two times	15, at FAU (2/2/13)
Reb	9, vs. SAM (11/18/13)	12, twice
Blocks	1, vs. SAM (11/18/13)	3, vs. ULL (3/2/13)
Steals	2, vs. SAM (11/18/13)	6, vs. WKU (3/8/13)
Min	33, vs. KU (11/8/13)	42, vs. Troy (1/26/13)

Opponent	Date	GS	Min	FG-FGA/Pct.	3FG-FGA	FT-FTA/PCT	O-D-T	PF-FO	A	TO	Blk	Stl	Pts/Avg
Kansas	11/8/13	*	33	2-8/.250	0-0	1-3/.333	0-4-4	4-0	4	0	0	1	5/5.0
Samford	11/18/13	*	26	6-8/.750	0-1	2-2/1.000	1-8-9	2-0	4	2	1	2	14/9.5
NSU													
Thomas													
LSU													
Ole Miss													
La. Tech													
OSU													
ULL													
UTA													
TX ST													
Troy													
USA													
WKU													
GSU													
ASU													
ULL													
TX ST													
UTA													
UALR													
GSU													
WKU													
USA													
Troy													
ASU													
UALR													
Totals		2	59	8-16/.500	0-1	3-5/.600	1-12-13	6-0	8	2	1	3	19/9.5



	Season-High	Career-High
Pts	N/A	22, at UALR (2/4/12)
FG	N/A	7, at USA (1/17/13)
3FG	N/A	3, at UALR (2/4/12)
FT	N/A	5, at NT (2/16/12)
Ast	N/A	9, at USA (2/11/12)
Reb	N/A	9, at NT (2/16/12)
Blocks	N/A	1, twice
Steals	N/A	4, at USA (1/17/13)
Min	N/A	37, at FAU (1/31/13)

[illegible]



4 R.J. McCray

Senior | Guard | 6-2 | 190
Arlington, Texas | Grace Prep Academy

	Season-High	Career-High
Pts	5, two times	17, at SLU (12/10/12)
FG	1, two times	5, at NT (1/5/13)
3FG	N/A	3, vs. Troy (1/26/13)
FT	3, two times	6, vs. Southern (12/13/12)
Ast	2, vs. SAM (11/18/13)	7, vs. UALR (2/7/13)
Reb	1, vs. SAM (11/18/13)	4, vs. Troy (1/26/13)
Blocks	N/A	2, at Tennessee (11/16/11)
Steals	2, vs. SAM (11/18/13)	4, vs. WKU (12/29/11)
Min	14, vs. SAM (11/18/13)	42, at SLU (12/10/12)

Opponent	Date	GS	Min	FG-FGA/Pct.	3FG-FGA	FT-FTA/PCT	O-D-T	PF-FO	A	TO	Blk	Stl	Pts/Avg
Kansas	11/8/13		9	1-2/.500	0-0	3-4/.750	0-0-0	1-0	0	0	0	0	5/5.0
Samford	11/18/13		14	1-4/.250	0-2	3-3/1.000	0-1-1	0-0	2	0	0	2	5/5.0
NSU													
Thomas													
LSU													
Ole Miss													
La. Tech													
OSU													
ULL													
UTA													
TX ST													
Troy													
USA													
WKU													
GSU													
ASU													
ULL													
TX ST													
UTA													
UALR													
GSU													
WKU													
USA													
Troy													
ASU													
UALR													
Totals		21	2-6/.333	0-2	6-7/.857	0-1-1	1-0	2	0	0	0	2	10/5.0



11 Nick Coppola

Freshman | Guard | 5-11 | 195
Richmond, Va. | Benedictine Prep

	Season-High	Career-High
Pts	10, at KU (11/8/13)	10, at KU (11/8/13)
FG	2, two times	2, two times
3FG	1, at KU (11/8/13)	1, at KU (11/8/13)
FT	5, at KU (11/8/13)	5, at KU (11/8/13)
Ast	6, vs. SAM (11/18/13)	6, vs. SAM (11/18/13)
Reb	3, two times	3, two times
Blocks	N/A	N/A
Steals	N/A	N/A
Min	31, at KU (11/8/13)	31, at KU (11/8/13)

Opponent	Date	GS	Min	FG-FGA/Pct.	3FG-FGA	FT-FTA/PCT	O-D-T	PF-FO	A	TO	Blk	Stl	Pts/Avg
Kansas	11/8/13	*	31	2-5/.400	1-3	5-7/.714	0-3-3	0-0	2	2	0	0	10/10.0
Samford	11/18/13	*	26	2-5/.400	0-1	1-3/.333	0-3-3	2-0	6	0	0	0	5/7.5
NSU													
Thomas													
LSU													
Ole Miss													
La. Tech													
OSU													
ULL													
UTA													
TX ST													
Troy													
USA													
WKU													
GSU													
ASU													
ULL													
TX ST													
UTA													
UALR													
GSU													
WKU													
USA													
Troy													
ASU													
UALR													
Totals		2	57	4-10/.400	1-4	6-10/.600	0-6-6	2-0	8	2	0	0	15/7.5



10 Amos Olatayo

Senior | Guard | 6-4 | 200
Houston, Texas | Navarro College

	Season-High	Career-High
Pts	22 vs. SAM (11/18/13)	30, at FIU (2/2/13)
FG	10, vs. SAM (11/18/13)	12, at FIU (2/2/13)
3FG	2, vs. SAM (11/18/13)	3, vs. Troy (1/26/13)
FT	1, at KU (11/8/13)	9, vs. ULL (3/2/13)
Ast	2, at KU (11/8/13)	4, vs. ULL (3/2/13)
Reb	4, vs. SAM (11/18/13)	11, at ASU (1/19/13)
Blocks	1, vs. SAM (11/18/13)	2, twice (2012-13 season)
Steals	1, two times	4, vs. ULL (3/2/13)
Min	33, at KU (11/8/13)	40, vs. ASU (2/15/13)

Opponent	Date	GS	Min	FG-FGA/Pct.	3FG-FGA	FT-FTA/PCT	O-D-T	PF-FO	A	TO	Blk	Stl	Pts/Avg
Kansas	11/8/13	*	33	5-10/.500	0-2	1-2/.500	1-2-3	3-0	2	4	0	1	11/11.0
Samford	11/18/13	*	25	10-13/.769	2-4	0-0/.000	2-2-4	1-0	0	2	1	1	22/16.5
NSU													
Thomas													
LSU													
Ole Miss													
La. Tech													
OSU													
ULL													
UTA													
TX ST													
Troy													
USA													
WKU													
GSU													
ASU													
ULL													
TX ST													
UTA													
UALR													
GSU													
WKU													
USA													
Troy													
ASU													
UALR													
Totals		2	58	15-23/.652	2-6	1-2/.500	3-4-7	4-0	2	6	1	2	33/16.5



12 Tylor Ongwae

Junior | Forward | 6-7 | 205
Eldoret, Kenya | Ranger College

	Season-High	Career-High
Pts	14, vs. SAM (11/18/13)	14, vs. SAM (11/18/13)
FG	5, vs. SAM (11/18/13)	5, vs. SAM (11/18/13)
3FG	N/A	N/A
FT	4, vs. SAM (11/18/13)	4, vs. SAM (11/18/13)
Ast	3, two times	3, two times
Reb	5, vs. SAM (11/18/13)	5, vs. SAM (11/18/13)
Blocks	1, vs. SAM (11/18/13)	1, vs. SAM (11/18/13)
Steals	2, vs. SAM (11/18/13)	2, vs. SAM (11/18/13)
Min	25, vs. SAM (11/18/13)	25, vs. SAM (11/18/13)

Opponent	Date	GS	Min	FG-FGA/Pct.	3FG-FGA	FT-FTA/PCT	O-D-T	PF-FO	A	TO	Blk	Stl	Pts/Avg
Kansas	11/8/13	*	15	1-4/.250	0-2	2-2/1.000	1-1-2	5-1	3	1	0	1	4/4.0
Samford	11/18/13	*	25	5-11/.455	0-1	4-5/.800	3-2-5	0-0	3	1	1	2	14/9.0
NSU													
Thomas													
LSU													
Ole Miss													
La. Tech													
OSU													
ULL													
UTA													
TX ST													
Troy													
USA													
WKU													
GSU													
ASU													
ULL													
TX ST													
UTA													
UALR													
GSU													
WKU													
USA													
Troy													
ASU													
UALR													
Totals		2	40	6-15/.400	0-3	6-7/.857	4-3-7	5-1	6	2	1	3	18/9.0



	Season-High	Career-High
Pts	6, vs. SAM (11/18/13)	6, vs. SAM (11/18/13)
FG	2, vs. SAM (11/18/13)	2, vs. SAM (11/18/13)
3FG	N/A	N/A
FT	2, vs. SAM (11/18/13)	2, vs. SAM (11/18/13)
Ast	N/A	N/A
Reb	2, vs. SAM (11/18/13)	2, vs. SAM (11/18/13)
Blocks	N/A	N/A
Steals	N/A	N/A
Min	6, vs. SAM (11/18/13)	6, vs. SAM (11/18/13)



20 Evan Sims

Junior | Forward | 6-8 | 235

Houston, Texas | Lamar State-Port Arthur

		Season-High					Career-High				
Pts		1, at KU (11/8/13)					1, at KU (11/8/13)				
FG		N/A					N/A				
3FG		N/A					N/A				
FT		1, at KU (11/8/13)					1, at KU (11/8/13)				
Ast		1, at KU (11/8/13)					1, at KU (11/8/13)				
Reb		3, at KU (11/8/13)					3, at KU (11/8/13)				
Blocks		N/A					N/A				
Steals		N/A					N/A				
Min		12, at KU (11/8/13)					12, at KU (11/8/13)				

Opponent	Date	GS	Min	FG-FGA/Pct.	3FG-FGA	FT-FTA/PCT	O-D-T	PF-F	A	TO	Blk	Stl	Pts/Avg
Kansas	11/8/13	12		0-2/.000	0-0	1-4/.250	0-3-3	4-0	1	1	0	0	1/1.0
Samford	11/18/13	7		0-1/.000	0-0	0-0/.000	0-1-1	1-0	0	1	0	0	0/0.5
NSU													
Thomas													
LSU													
Ole Miss													
La. Tech													
OSU													
ULL													
UTA													
TX ST													
Troy													
USA													
WKU													
GSU													
ASU													
ULL													
TX ST													
UTA													
UALR													
GSU													
WKU													
USA													
Troy													
ASU													
UALR													
Totals		19		0-3/.000	0-0	1-4/.250	0-4-4	5-0	1	2	0	0	1/0.5



	Season-High	Career-High
Pts	N/A	15, vs. WKU (3/8/13)
FG	N/A	5, vs. WKU (3/8/13)
3FG	N/A	4, vs. WKU (3/8/13)
FT	N/A	4, vs. ASU (2/16/13)
Asst	1, two times	6, vs. FAU (12/29/12)
Reb	N/A	3, vs. WKU (3/8/13)
Blocks	N/A	N/A
Steals	1, vs. SAM (11/18/13)	4, vs. FAU (12/29/12)
Min	21, at KU (11/8/13)	36, vs. WKU (3/8/13)

[illegible]



	Season-High	Career-High
Pts	2, at KU (11/8/13)	21, vs. NT (2/14/13)
FG	N/A	9, vs. NT (2/14/13)
3FG	N/A	N/A
FT	2, at KU (11/8/13)	3, at NT (2/14/13)
Ast	N/A	4, vs. WKU (3/8/13)
Reb	4, vs. SAM (11/18/13)	12, vs. WKU (2/21/13)
Blocks	N/A	2, at FIU (2/2/13)
Steals	N/A	3, vs. LTU (11/24/12)
Min	12, vs. SAM (11/18/13)	36, at ASU (11/19/13)

Thomas
LSU
Ole Miss
La. Tech
OSU
ULL
UTA
TX ST
Troy
USA
WKU
GSU
ASU
ULL
TX ST
UTA
UALR
GSU
WKU
USA
Troy
ASU
UALR

34 Leon Carswell JJ

	Season-High	Career-High
Pts	N/A	N/A
FG	N/A	N/A
3FG	N/A	N/A
FT	N/A	N/A
Asst	N/A	N/A
Reb	N/A	N/A
Blocks	N/A	N/A
Steals	N/A	N/A
Min	N/A	N/A

Thomas
LSU
Ole Miss
La. Tech
OSU
ULL
UTA
TX ST
Troy
USA
WKU
GSU
ASU
ULL
TX ST
UTA
UALR
GSU
WKU
USA
Troy
ASU
UALR



	Season-High	Career-High
Pts	13, vs. SAM (11/18/13)	13, vs. SAM (11/18/13)
FG	5, vs. SAM (11/18/13)	5, vs. SAM (11/18/13)
3FG	3, vs. SAM (11/18/13)	3, vs. SAM (11/18/13)
FT	N/A	N/A
Ast	1, vs. SAM (11/18/13)	1, vs. SAM (11/18/13)
Reb	3, vs. SAM (11/18/13)	3, vs. SAM (11/18/13)
Blocks	N/A	N/A
Steals	1, vs. SAM (11/18/13)	1, vs. SAM (11/18/13)
Min	16, vs. SAM (11/18/13)	16, vs. SAM (11/18/13)

Thomas
LSU
Ole Miss
La. Tech
OSU
ULL
UTA
TX ST
Troy
USA
WKU
GSU
ASU
ULL
TX ST
UTA
UALR
GSU
WKU
USA
Troy
ASU
UALR

35 Colten Ponder

	Season-High	Career-High
Pts	N/A	N/A
FG	N/A	N/A
3FG	N/A	N/A
FT	N/A	N/A
Asst	N/A	N/A
Reb	N/A	1, vs. LTU (11/24/12)
Blocks	N/A	N/A
Steals	N/A	N/A
Min	N/A	1, vs. LTU (11/24/12)

Thomas
LSU
Ole Miss
La. Tech
OSU
ULL
UTA
TX ST
Troy
USA
WKU
GSU
ASU
ULL
TX ST
UTA
UALR
GSU
WKU
USA
Troy
ASU
UALR

Totals



Warhawks Men's Basketball

University of Louisiana at Monroe



2013-14 ULM MEN'S BASKETBALL ULM Combined Team Statistics (as of Nov 19, 2013) All games

2013-14 Stats

RECORD:	OVERALL	HOME	AWAY	NEUTRAL
ALL GAMES	1-1	1-0	0-1	0-0
CONFERENCE	0-0	0-0	0-0	0-0
NON-CONFERENCE	1-1	1-0	0-1	0-0

#	Player	gp-gs	min	avg	Total	3-Point	F-Throw	Rebounds	pf	dq	a	to	blk	stl	pts	avg
					fg-fga	fg%	3fg-fga	3fg%	ft-fa	ft%	off	def	tot	avg		
00	Williams, Marvin	2-2	45	22.5	10-19	.526	1-1	1.000	3-5	.600	2	7	9	4.5	8	1
01	James, Jayon	2-2	59	29.5	8-16	.500	0-1	.000	3-5	.600	1	12	13	6.5	6	0
02	Harvey, DeMondre	2-0	22	11.0	1-2	.500	0-0	.000	0-0	.000	0	7	7	3.5	4	0
04	McCray, RJ	2-0	23	11.5	2-6	.333	0-2	.000	6-7	.857	0	1	1	0.5	1	0
10	Olatayo, Amos	2-2	58	29.0	15-23	.652	2-6	.333	1-2	.500	3	4	7	3.5	4	0
11	Coppola, Nick	2-2	57	28.5	4-10	.400	1-4	.250	6-10	.600	0	6	6	3.0	2	0
12	Ongwae, Tylor	2-2	36	18.0	6-15	.400	0-3	.000	6-7	.857	4	3	7	3.5	5	1
13	Amajoyi, Chinedu	2-0	9	4.5	2-3	.667	0-1	.000	2-4	.500	2	0	2	1.0	1	0
15	Koszuta, Kyle	2-0	34	17.0	0-6	.000	0-4	.000	0-0	.000	0	0	0	0.0	3	0
20	Sims, Evan	2-0	19	9.5	0-3	.000	0-0	.000	1-4	.250	0	4	4	2.0	5	0
23	Brown, Millaun	2-0	16	8.0	0-4	.000	0-0	.000	2-2	1.000	3	1	4	2.0	5	0
33	Grieves, Daniel	2-0	22	11.0	7-9	.778	5-7	.714	0-1	.000	1	3	4	2.0	3	0
Team											2	3	5			
Total.....		2	400		55-116	.474	9-29	.310	30-47	.638	18	51	69	34.5	47	2
Opponents.....		2	400		45-100	.450	8-33	.242	34-55	.618	16	52	68	34.0	45	-

TEAM STATISTICS	ULM	OPP
SCORING	149	132
Points per game	74.5	66.0
Scoring margin	+8.5	-
FIELD GOALS-ATT	55-116	45-100
Field goal pct	.474	.450
3 POINT FG-ATT	9-29	8-33
3-point FG pct	.310	.242
3-pt FG made per game	4.5	4.0
FREE THROWS-ATT	30-47	34-55
Free throw pct	.638	.618
F-Throws made per game	15.0	17.0
REBOUNDS	69	68
Rebounds per game	34.5	34.0
Rebounding margin	+0.5	-
ASSISTS	32	26
Assists per game	16.0	13.0
TURNOVERS	23	30
Turnovers per game	11.5	15.0
Turnover margin	+3.5	-
Assist/turnover ratio	1.4	0.9
STEALS	15	15
Steals per game	7.5	7.5
BLOCKS	5	7
Blocks per game	2.5	3.5
ATTENDANCE	1503	16300
Home games-Avg/Game	1-1503	1-16300
Neutral site-Avg/Game	-	0-0

Score by Periods	1st	2nd	Totals
ULM	76	73	149
Opponents	69	63	132

Date	Opponent	Score	Att.
11/08/13	at Kansas	L 63-80	16300
11/18/13	SAMFORD	W 86-52	1503

* - Conference game

Double-Figures	Season 10+ Points	Season 10+ Rebs	Season 10+ Asts
Amos Olatayo	2 times (20+ 1 time)		
Daniel Grieves	1 time		
Jayon James	1 time		
Tylor Ongwae	1 time		
Marvin Williams	1 time		
Nick Coppola	1 time		

Double-Figures	Career 10+ Points	Career 10+ Rebs	Career 10+ Asts
Amos Olatayo	19 times (20+ 10 times)	1 time	
Marcelis Hansberry	15 times (20+ 1 time)		
Jayon James	14 times (20+ 1 time)	6 times	2 times
R.J. McCray	11 times		
Millaun Brown	5 times (20+ 1 time)	1 time	
Kyle Koszuta	3 times		
Marvin Williams	1 time		
Nick Coppola	1 time		
Daniel Grieves	1 time		
Tylor Ongwae	1 time		

Single-Game Categorical Highs 2013-14	Double-Doubles
Points	Amos Olatayo - 22 (vs. Samford)
Field Goals Made	Amos Olatayo - 10 (vs. Samford)
3FG Made	Daniel Grieves - 3 (vs. Samford)
Free Throws Made	Nick Coppola - 5 (at Kansas)
Rebounds	Jayon James - 9 (vs. Samford)
Assists	Nick Coppola - 6 (vs. Samford)
Steals	Three Tied - 2 (vs. Samford)
Blocks	Five Tied - 1 (vs. Samford)
	Jayon James - five career
	10 pt, 12 reb vs SLU (12/10/12)
	11 pt, 12 reb vs SU (12/13/12)
	26 pt, 10 reb vs FAU (12/12/12)
	19 pt, 10 reb at NT (1/5/13)
	11 pt, 15 ast at FIU (2/2/13)



James Named to SBC Preseason All-Conference Third-Team

ULM men's basketball senior Jayon James earned a spot on the 2013-14 Sun Belt Conference Preseason Third-Team, the conference office announced.

The preseason All-SBC teams were voted on by the league's 10 head coaches. Coaches were not permitted to vote for their own players.

James, a forward, led the Warhawks in minutes, rebounds, assists, blocks and steals last year. He averaged 9.4 points per game and scored in double-figures 13 times. He posted a career-high 26 points against Florida Atlantic on Dec. 29, 2012.

The Paterson, N.J. native recorded five double-doubles on the season. Four of which came from points and rebounds, and he registered 11 points and 15 assists at FIU on Feb. 2. He appeared in all 27 games last season and led the team with 26 starts.

James ranked second in the Sun Belt and 58th nationally with 5.1 assists per game last season. His 137 assists ranks seventh on ULM's all-time single-season list. He led the team in assists in 20 games.

The 2013-14 season will be the first time the program will have a full scholarship roster under head coach Keith Richard after inheriting APR penalties.

Sun Belt Conference Preseason Coaches Poll

1. WKU - 91 (5)
2. South Alabama - 78 (2)
3. Arkansas State - 74
- T-4. Georgia State - 73 (2)
- T-4. UL-Lafayette - 73 (1)
6. UALR - 48
7. UT Arlington - 36
8. Texas State - 34
9. Troy - 26
10. ULM - 17



James, Olatayo Named to CSM Preseason All-SBC Third-Team

Seniors Jayon James and Amos Olatayo were named to the 2013-14 College Sports Madness Sun Belt Preseason All-Conference Third-Team and return as two of the team's four starters from last season.

Olatayo, a guard, returns as ULM's leading scorer from last season after ranking fourth in the conference with 15.8 points per game. He scored in double figures 17 times last season, including each of the last eight games.

The Alief, Texas product tallied at least 20 points in eight conference games, including a season-high 30 at FIU on Feb. 2. He also poured in 24 against Middle Tennessee on Jan. 12 after shooting 9-of-15 from the field.

Olatayo ranked 15th in the conference with 5.8 rebounds per game, and was second on the team in blocks and steals. He took the ball strong to the basket all season and led the team with 119 free throw attempts.





Warhawks Men's Basketball

University of Louisiana at Monroe



Media Roster



0 Marvin Williams

Junior | Center
6-8 | 245
Memphis, Tenn.
NW Florida State College



13 Chinedu Amajoyi

Junior | Guard
6-3 | 195
Rancho Cucamonga, Calif.
Kilgore College



1 Jayon James

Senior | Forward
6-6 | 225
Paterson, N.J.
Lamar State-Port Arthur



15 Kyle Koszuta

Sophomore | Guard
6-2 | 190
Niceville, Fla.
Niceville HS



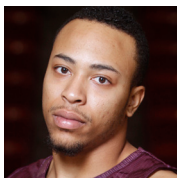
2 DeMondre Harvey

Sophomore | Forward
6-7 | 210
Minden, La.
Pearl River CC



20 Evan Sims

Junior | Forward
6-8 | 235
Houston, Texas
Lamar State-Port Arthur



3 Marcellis Hansberry

Senior | Guard
6-0 | 185
Jackson, Miss.
Provine HS



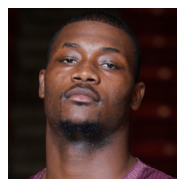
22 Lance Richard

Freshman | Guard
5-10 | 170
Monroe, La.
Sterlington HS



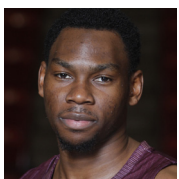
4 R.J. McCray

Senior | Guard
6-2 | 190
Arlington, Texas
Grace Prep Academy



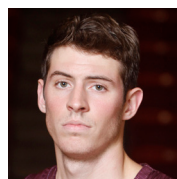
23 Millann Brown

Senior | Forward
6-7 | 230
Gunnison, Miss.
East Mississippi CC



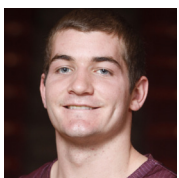
10 Amos Olatayo

Senior | Guard
6-4 | 200
Houston, Texas
Navarro College



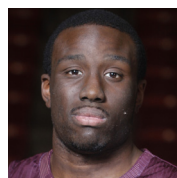
33 Daniel Grieves

Sophomore | Guard
6-6 | 210
Bay St. Louis, Miss.
Pearl River CC



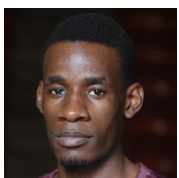
11 Nick Coppola

Freshman | Guard
5-11 | 195
Richmond, Va.
Benedictine Prep



34 Leon Carswell JJ

Junior | Forward
6-3 | 225
Bossier City, La.
Hannibal-LaGrange University



12 Tylor Ongwae

Junior | Forward
6-7 | 205
Eldoret, Kenya
Ranger College



35 Colten Ponder

Sophomore | Forward
6-5 | 215
Shreveport, La.
Calvary Baptist Academy